

Aftermarket Services



Coating Training

- Operator: Set-up, processing, troubleshooting, optimization basics, cleaning
- Maintenance and Supervisors
- COMPU-COAT Controls

Tablet Press Training

- Fundamentals of operation
- Operator: Tooling, set-up, operation, troubleshooting
- Maintenance and Supervisor

Tooling

- Tooling Principles
- Inspection/Measuring
- Cleaning/Maintenance

Customized Training is also available to meet your needs!

Consumable Spares

Includes parts which will wear due to daily use.

Emergency Spares

This kit contains components not readily available off the shelf in case of a catastrophic failure.

Commissioning Spares

Consists of parts which are consumed during commissioning of the system.



- Field Services
 - Calibration
 - Preventive Maintenance
 - Process Optimization
 - Commissioning
 - Validation Support
- Training
 - Coating Systems
 - Tablet Presses
 - Punch & Die Tooling
- Spares Kits
 - Consumables
 - Emergency
 - Commissioning



**CALL YOUR
CUSTOMER SERVICE REPRESENTATIVE**
800.634.9910

Thomas Engineering Inc.
575 West Central Road
Hoffman Estates . IL . 60192
p . 800.634.9910 / f . 847.358.5817
www.thomaseng.com
teimktg@thomaseng.com

Calibration



Detailed OEM procedures are followed and provided when calibrating your tablet press or coating system.

The following adjustments are calibrated on Tablet Presses:

- Punch Insertion Depth
- Punch Separation
- Depth of Fill or Dosing
- Press Speed
- Feeder Speed
- Compression Force



Instruments calibrated in Coating Drums:

- Current to Pressure Transducers
- Pressure to Current Transducers
- Temperature Probes
- Dew Point Probes
- Photohelics
- Loop Tests for automated applications

Calibration book is provided and includes:

- Procedures with calibration data
- Calibration Certificates (stickers placed on instruments showing next calibration date).

All calibration equipment is NIST Traceable.

Quarterly, bi-annual and annual calibration programs offered.

Preventive Maintenance



Annual or bi-annual preventive maintenance services for your Thomas Engineering coating systems and KORSCH tablet presses offered.

All equipment is checked to verify proper functionality to meet OEM specifications.



Tablet presses are fully inspected to check the state of all cams, compression rolls, punch seals, punch bores, die pockets, interlocks and drive.

Coating system drive components are inspected, along with solution pumps, tubing, seals, mixing baffles, door interlocks and the bypass assembly, if installed.

The spray manifold is inspected to verify the condition of all seals, spray nozzles and needles.

Air Handling Units are inspected to ensure the blowers and motors are secure and filters are checked.

All electrical and control cabinets are inspected for:

- Arcing of components
- Loose wiring

Process Optimization



Ensure your coating system is operating at optimum conditions.

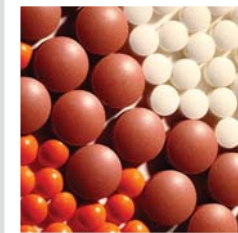
Does your coating process have any of these problems?

- Rough or unattractive tablet finish
- Coating times that are too long
- Low coating efficiencies
- Poor coating uniformity

Our team of technicians and process experts can visit your site for a one-day or multi-day visit to observe your coating operations and evaluate the following areas:

- Coating process parameters
- Operating procedures
- Maintenance procedures
- Condition of the coating equipment
- Potential equipment upgrades and improvements

CALL US TODAY TO SCHEDULE A VISIT!
800.634.9910



We issue a comprehensive report covering all the findings, with recommendations specifically formulated to improve your coating operations.

Thomas Engineering is the leading manufacturer of tablet coaters in North America. Our staff has over thirty years experience with all types of pharmaceutical coating processes from film to sugar to enteric to active.