



Process Air HEPA Filtration (optional)

- 99.97% efficient on 0.3 micron particles.
- Tapered separators ensure uniform airflow.
- Furnished integral with process AHU or as stand-alone unit for remote mounting in air duct.

Face and Bypass Temperature Control

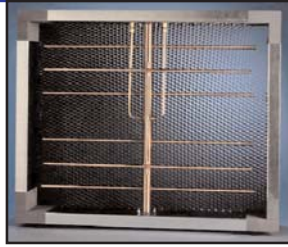
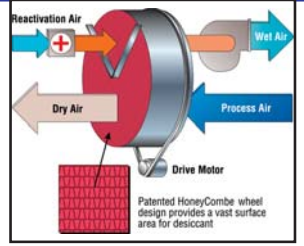
- Direct-coupled electric actuator; low leakage design throughout.
- Smooth response during start-up; maintains set-point during coating process.

Roughing and Medium Process Air Filtration

- Two stages, typically 30-35% and 60-65%.
- Differential pressure monitoring for service notification.

Desiccant Dehumidification (optional)

- Maximum drying of process air for very low dew point requirements (less than 10°C).
- Fully integrated with process air handling system using COMPU-COAT controls.



Air Flow Measuring Station

- Pitot tube array with straightening vanes.
- Corrosion-resistant air straightener and manifolds.
- Durable galvanized or optional stainless steel construction; includes mounting flanges.



Exhaust Blower with VFD and Motor

- Precision-balanced blower wheel; designed for continuous operation.
- Spark-resistant construction for all applications.
- Direct drive unit to maximize efficiency and reduce maintenance.



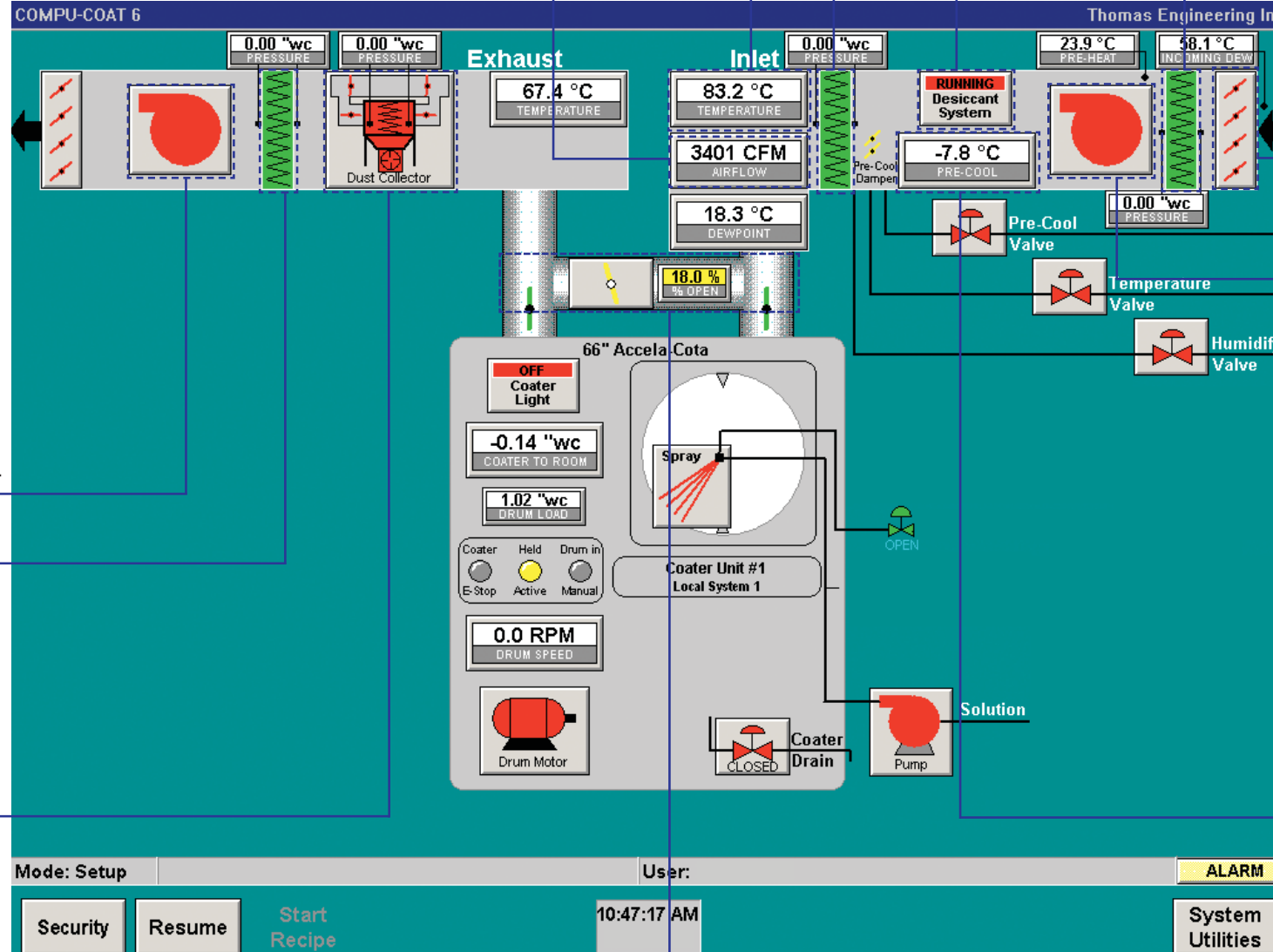
Exhaust HEPA Filtration (optional)

- 99.97% efficient; gel seals for leak free operation.
- Options for bag-in-/bag-out filter changes.



Exhaust Dust Collector

- Ledgeless construction eliminates dust build-up.
- Acrylic urethane exterior finish; suitable for indoor and outdoor installations.
- High efficiency exhaust air filtration.
- Number of cartridges is defined by air flow requirements.



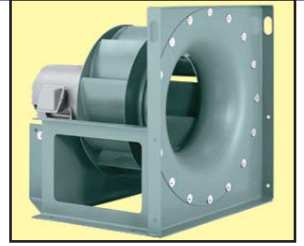
Outside Air Inlet Damper/Actuator

- Pneumatic damper actuator.
- Limit switch for position verification.



Process Air Blower with VFD and Motor

- AMCA certified blower for outstanding performance.
- Air diffuser for excellent air velocity profile through heating coils.



Chilled Water Dehumidification Coils (optional)

- Corrosion-resistant stainless steel casing.
- Stainless steel drain pan.
- Lowers process air dew point to approximately 10°C in most installations.



Process Air Bypass (optional)

- Maintains process air flow conditions during process pause.
- Pan/Load compensation for automatic blower regulation.
- Required with COMPU-COAT controls; integral component for process automation and alarm response strategies.

