

The ACCELA-COTA® system can be customized to meet every unique process requirement.
Talk to our sales staff about your specific application.



Standard System Services

- Contractor meeting
- Factory Acceptance Test
- System start-up
 - installation verification
 - functional loop checks
 - tuning and optimization
- Training



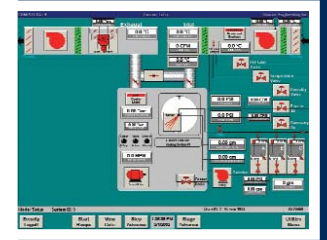
Features - optional

- High polish mixing baffles
- High polish drum interior
- Pan speed sensing
- Tablet sampling port with sampling thief
- Front access door (non-interlocked)
- Unloading, scoop (316SS)
- Unloading, scoop (polyethylene)
- Pan light
- Air bypass assembly -sanitary design
- COMPU-COAT control interface
- Rotating spray balls - WIP interface
- Spare parts kit
- Solvent coating



Services - optional

- Extended FAT
- Preparation and execution of IQ/OQ protocols
- IQ/OQ protocols
- Commissioning
- Validation documentation assistance
- Commissioning and IQ/OQ
- 21CFR Part 11 validation assistance



Coating Technology - Equipment Range



- ACCELA-COTA® "D" and ACCELA-COTA® "S"
 - Production Size Batch Coaters (with sizes ranging from 48", 60" or 66" coating pans)
- 24" and 36" COMPU-LAB
 - Fully-Integrated Laboratory Size Coaters
- ACCELA-COTA® Spectrum
 - Containment Batch Coaters
- Continuous Coaters
 - High Throughput for Continuous Applications

ACCELA-COTA® D



THOMAS ENGINEERING INC.
575 WEST CENTRAL ROAD
HOFFMAN ESTATES, IL 60192
847/358-5800
847/358-5817
WWW.THOMASENG.COM



With over 45 years in the pharmaceutical industry, Thomas Engineering offers you unprecedented levels of experience, knowledge and stability when it comes to your coating applications. As the manufacturer of fully perforated pan coating systems, Thomas is equipped with the engineering and manufacturing resources to create total system solutions tailored precisely to your individual tablet coating needs.

Our commitment to manufacturing is best demonstrated by our industry-leading **ACCELA-COTA® Systems**. Designed to the most exacting standards, each one offers unmatched levels of productivity, consistency and repeatability for your special requirements.

ACCELA-COTA® D
Equipped with a fully perforated coating pan and featuring double-wall construction, the **ACCELA-COTA® D Series** is available in several different pan sizes and is ideal for aqueous, solvent and sugar coating applications. The D Series offers all the advantages of the **ACCELA-COTA®** system, including greater efficiency, sound absorption and ease of cleaning.

Features

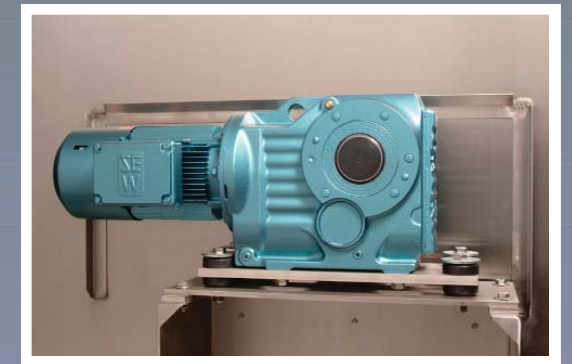
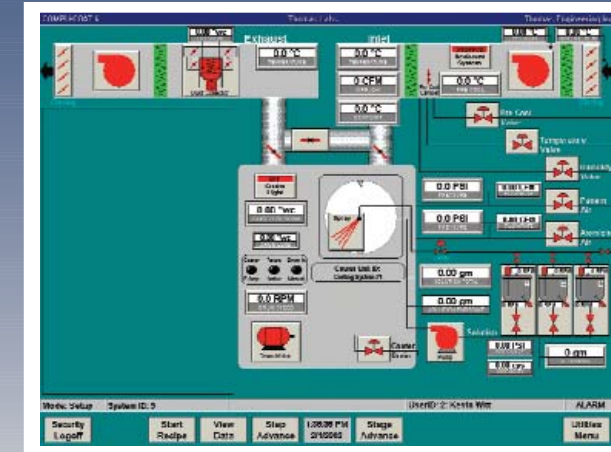
- Sealed exhaust and inlet plenums
- Fully perforated drum
- Fully gasketed doors
- Bypass availability
- Removable mixing baffles
- Sample thief
- Fully-articulated spray collar
- Integrated spray drawer
- Flush mounted electric cabinet
- Single-point utility connections
- Integrated gear motor (with VFD)
- Plenum design
- Exhaust plenum reduction baffles

Benefits

- Complete control of process air through the product.
- Provides the most efficient, durable design in the industry.
Available in standard or electro-polished finish, all 316L stainless steel.
Double-wall, fully welded cabinet.
Allows full wash-down and compliance with cGMP standards.
- Affords complete access to pan for loading, unloading and cleaning.
- Allows for pan access without affecting air process conditions.
- Provides consistent and effective tablet movement for improved uniformity.
- Convenient process product sampling.
- Allows easy access to spray guns and tablet bed.
- Saves valuable floor space.
- Easy access to PLC and I/O controls.
- Simplest installation design.
- Provides a virtually maintenance free drive system.
- Assures maximum exposure to process air and efficient, rapid drying.
- Accommodates batch-size flexibility.

COMPU-COAT Control

The advanced, user-friendly, integrated COMPU-COAT control features a touch screen panel flush-mounted on the front of the **ACCELA-COTA®**. This provides the operator unparalleled access to the machine and controls. The optional COMPU-COAT module allows for system networking and remote monitoring.



Improved Drive System

- VFD direct gear motor drive
- Automatic drive brake
- Eliminates belts and chains
- Improved reliability, less maintenance

Safety designed in

- Magnetic switch interlock on all doors
- Speed sensing and brake
- Top of machine utilities access
- NEC electrical ratings
- Optional 2-piece exhaust plenum for easy lifting
- Pan light
- Safety systems available for solvent applications



(80% less field wiring through remote I/O)

Remote I/O System

ACCELA-COTAS® are now available with locally integrated controls. This allows almost complete wiring and testing of the system at our factory. As a result, field wiring for controls is almost completely eliminated and reduced to just power and a network cable.

- Complete factory wiring
- Reduced cost installation
- Greater control flexibility



Fully Integrated Spraying System

Compact drawer located directly under the coating drum.

- Networked to the control PLC
- Reduces installation space
- Solution lines accessible with drawer open or closed
- Easy to clean and calibrate
- Peristaltic pump -- sanitary design.
- 4-hose manifold system: solution supply, solution return, atomizing air, trigger air
- High accuracy flowmeter



Fully Perforated Coating Drum

Industry-proven design for:

- Maximum coating quality
- High efficiency coating
- Unrestricted air flow
- Ideal mixing action
- Turbulence-free air at high flow rates
- Low temperature coating
- High speed coating

MAINTAIN TABLET LOGO DEFINITION
IMPROVE UNIFORMITY
DECREASE PROCESS TIMES
IMPROVE GLOSS

HIGHLY FLEXIBLE FOR A WIDE RANGE OF PROCESS APPLICATIONS