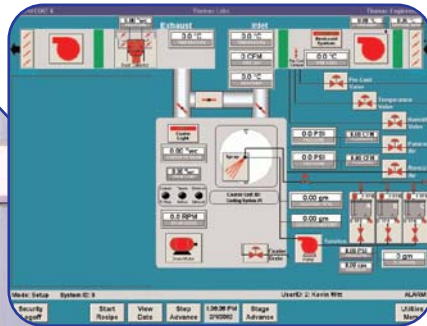


# THOMAS ENGINEERING'S COMPU-COAT 6 COATING CONTROLLER SERIES

CC6 BASIC  
CC6S  
CC6N



NETWORK SERVER



PROCESS SCREEN



HMI INTERFACE FOR CC6



COMPU-COAT 6 STAND-ALONE



## COMMITMENT TO:

- QUALITY
- VALUE
- MANUFACTURING EXCELLENCE
- CUSTOMER SATISFACTION

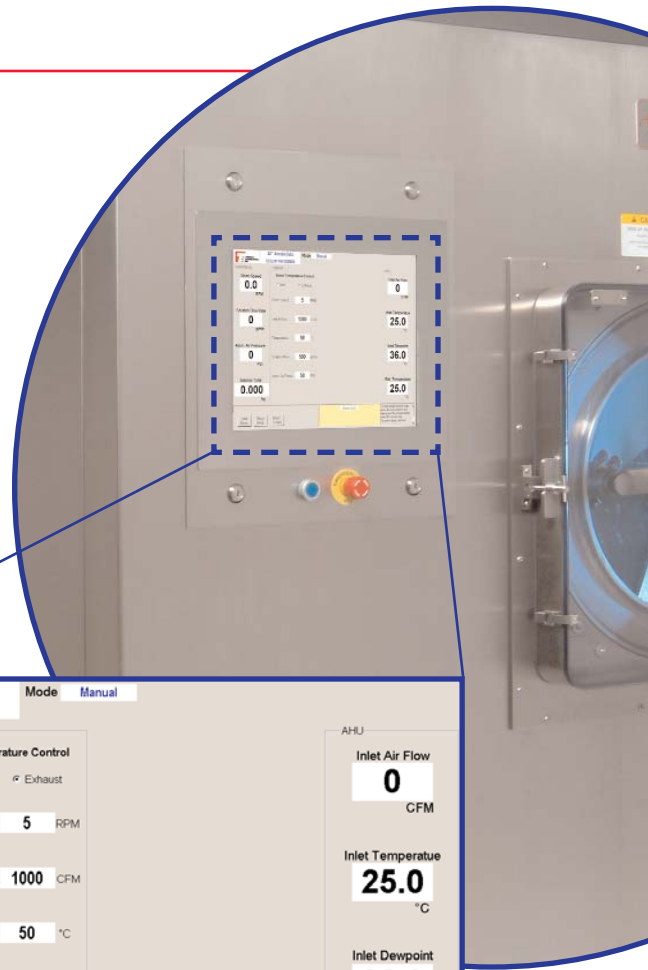
# COATING CONTROLLER SERIES

When it comes to coating applications in the pharmaceutical industry, Thomas Engineering maintains a strong leadership position with its extensive product offerings in coating systems, spray and air handling units as well as automation systems.

Thomas Engineering offers a range of user-friendly, PC based tablet coating automated control systems;

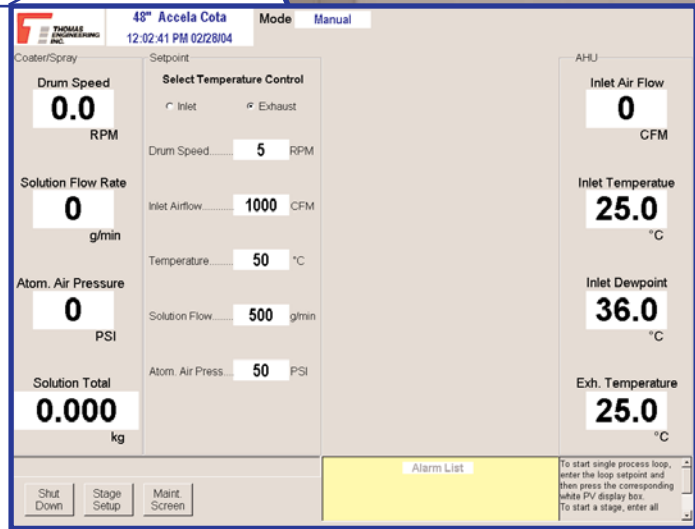
- Basic Coating Controls
- Stand-Alone Controls - COMPU-COAT 6S
- Networked Controls - COMPU-COAT 6N

This comprehensive array of control alternatives provides choices from simple PC/PLC controls to sophisticated, feature-rich, networked systems.



## BASIC CONTROLS

- Controls coater, inlet and exhaust AHU and spray drawer for aqueous coating in one control panel
- PLC based control system
- Manual and Stage Controls
- Optional Data Acquisition via chart recorder
- Automated control of current coating stage with process alarms and interlocks
- Ability to pre-program next stage while current stage is running
- Allen Bradley CompactLogix PLCs
- Remote I/O for all field devices to minimize field wiring and installation
- 18" color touch screen HMI mounted on front
- Embedded PC



## STAND-ALONE CONTROLS - COMPU-COAT 6S

The stand-alone, feature-rich version is dedicated to one coating system. All data is stored on a local industrial PC.

- Control of coater, spray drawer, inlet and exhaust AHU system for aqueous (standard), sugar (standard), solvent (optional) in one control panel
- Supports one coating system
- Manual and Recipe Controls
- Part 11 Electronic Records
- Part 11 Electronic Signatures (optional)
- Spray drawer compatible
- Allen Bradley ControlLogix controller PLC with local I/O
- Windows 2000, Microsoft + SQL database and Wonderware SCADA

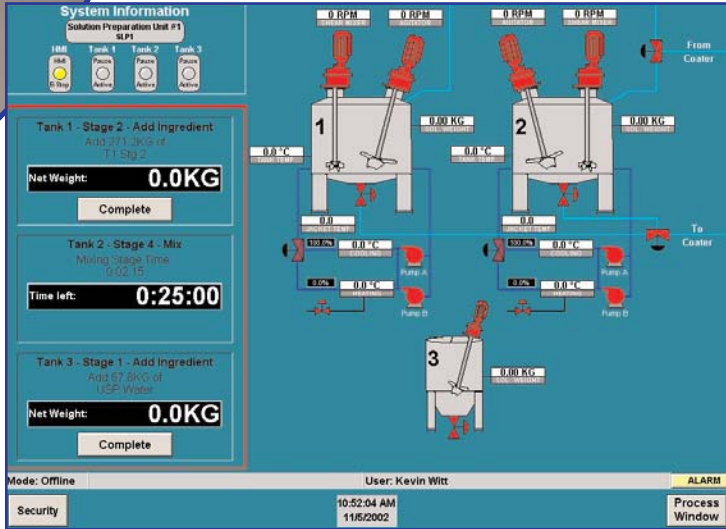


## NETWORKED CONTROLS - COMPU-COAT 6N

The networked version can be scaled to control up to four coating systems. All data is stored on a remote server which can be installed in an IT managed data center where data can be accessed for backup and records retention functions without entering the coating suite or interrupting the coating process.

The CC6N controller was designed for 21 CFR Part 11 but also incorporates significant advances.

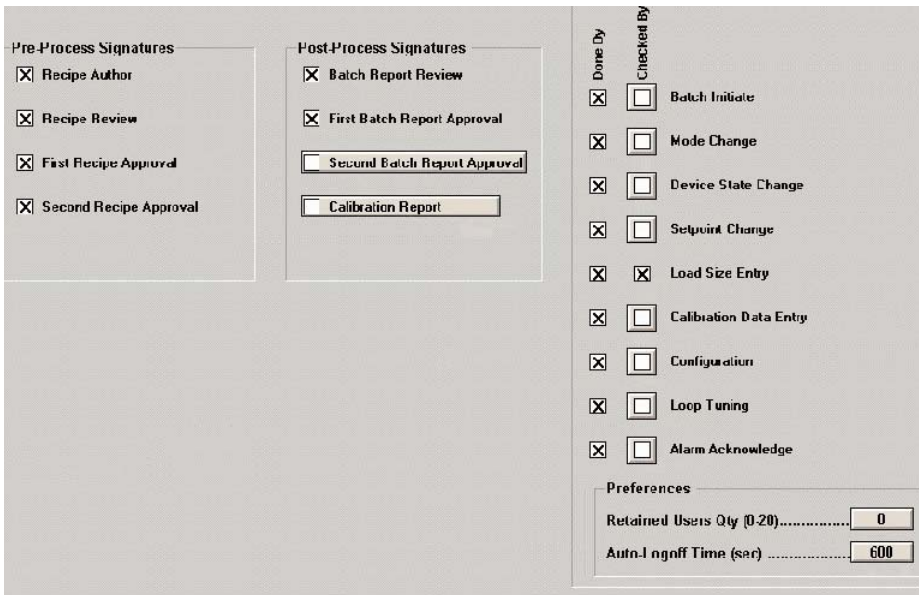
- Control of coater, spray drawer, inlet and exhaust AHU system for aqueous (standard), sugar (standard), solvent (optional) in one control panel
- Manual and Recipe Controls
- Solution Preparation (optional)



**SOLUTION PREPARATION SCREEN**

- Part 11 Electronic Records
- Part 11 Electronic Signatures (optional)
- Spray drawer compatible
- Wash-in-Place, Containment
- Allen Bradley ControlLogix controller PLC with remote I/O (FlexLogix) to minimize field wiring and reduce installation time
- COMPU-COAT SERVER
  - Server scalability (one to four coaters)
  - Technology upgrade to deploy a current and stable control architecture based on Windows 2000, Microsoft SQL and a Wonderware HMI SCADA
  - Secure location for application and data

### EXAMPLE OF ELECTRONIC SIGNATURES SCREEN

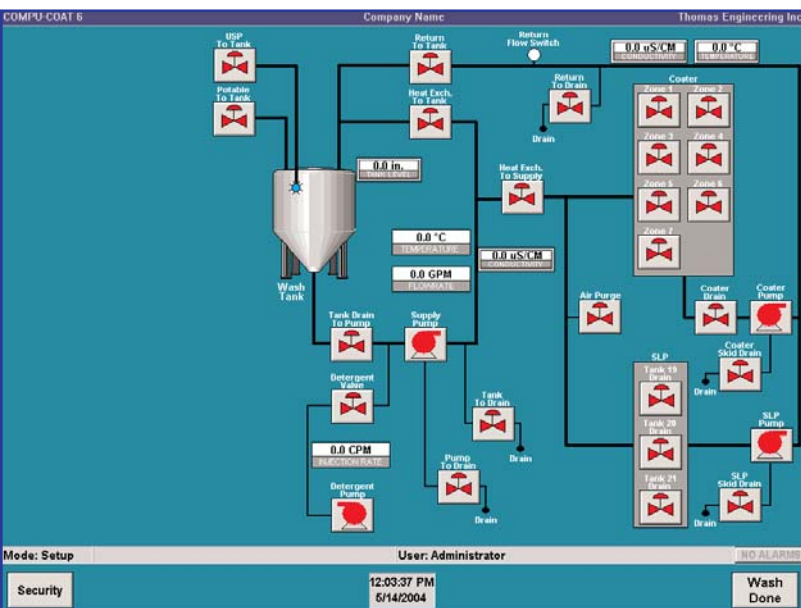


Title 21, Part 11 of the Code of Federal Regulations has been the law since 1997. The rule addresses electronic records and electronic signatures. Thomas Engineering has extensively reviewed the key requirements for 21CFR Part 11 compliance to develop COMPU-COAT 6

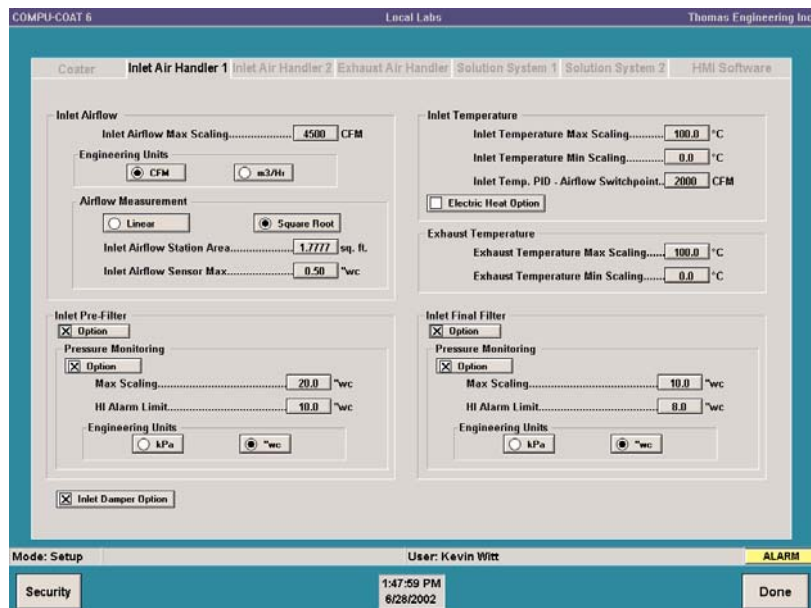
This is not a “quick” remediation approach; it is a highly-compliant strategy (records and signatures).

# OPTIONS

	<u>Basic Controls</u>	<u>COMPU-COAT 6S</u>	<u>COMPU-COAT 6N</u>
Aqueous Film Coating	Yes	Yes	Yes
Sugar Coating	Yes - Option	Yes	Yes
Solvent Coating	No	Yes - Option	Yes - Option
Manual Controls	Yes	Yes	Yes
Stage Controls	Yes	No	No
Recipe Controls	No	Yes	Yes
Data Acquisition	Yes - Option	Yes	Yes
Part 11 Compliant E-Records	No	Yes	Yes
Part 11 Compliant E-Sigs	No	Yes - Option	Yes - Option
Spray Drawer Compatible	Yes	Yes	Yes
Control AHU & Exhaust	Yes	Yes	Yes
Electric Heat	No	Yes - Option	Yes - Option
Desiccant	No	Yes - Option	Yes - Option
Wash-In-Place	No	No	Yes - Option
Containment	No	No	Yes - Option
Solution Preparation	No	No	Yes - Option
Architecture	Stand-Alone	Stand-Alone	Networked (1-4)
Hardware Implementation	Rockwell Logix	Rockwell Logix	Rockwell Logix
Software Application	TEI	Wonderware	Wonderware
Records	No Storage	Database	Database
Supervisor Station	No	No	Yes - Option



**WASH-IN-PLACE SCREEN**



**AIR HANDLING UNIT CONFIGURATION SCREEN**

THOMAS ENGINEERING INC.  
 575 WEST CENTRAL ROAD  
 HOFFMAN ESTATES, ILLINOIS 60195-0198  
 PHONE: 847/358-5800 FAX: 847/358-5817  
 TOLL FREE: 800/634-9910  
 WWW.THOMASENG.COM

