

Benefits of Thomas Engineering Continuous Coater

- Process high volume products with greater throughput than successive batch operations - Loading, warm-up, unloading and cool down are concurrent with the coating process; eliminate "sub-batching" and also reduce material handling.
- Improved coating uniformity - Shallow bed provides more frequent presentation of tablets to the solution spray; improves color uniformity and overall elegance of finish.
- Gentle handling of tablets - Short residence time and shallow tablet bed reduce attrition.
- Automatic infeed gently introduces tablets to the bed on a steady basis - Weigh belt interface permits tablet loading automation with COMPU-COAT control.
- Ideal for high volume OTC, nutraceutical and soft gel processing.
- Solution delivery options permit choice of commercially available spray guns.

Unit Specifications:

Throughput:	Up to 1300 liters per hour (depending on weight gain)
Solution Flowrate:	3000 ml/min. maximum (depending on solution properties)
Spray Guns:	18 on two independent manifolds; other options available
Air Flow Ranges:	2,500 to 7,000 cfm (or) 6,000 to 10,000 cfm
Inlet Air Temperature:	85°C max.
Pan Speed:	3-18 rpm
Wash-in-Place System:	12 nozzles, 2 to 7 gpm per nozzle; 2-zone valves
Pan Dimensions:	24" diameter x 160" long
Unit Dimensions:	15'3" ft. x 4'2" ft. x 10'9" ft.
Suggested minimum floor space:	30' ft. x 9' ft. (with spray manifolds extracted)
Construction materials:	304 stainless steel body, 316L stainless steel product contact surfaces
Process Control:	COMPU-COAT

Screw type mixing baffles for consistent mixing



Easily removable spray manifolds



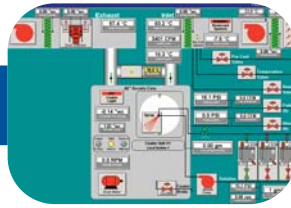
Process Air Bypass



Dual Spray System for process versatility



COMPU-COAT Controls

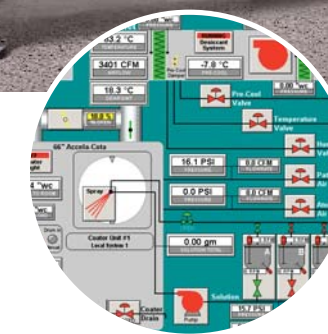


Optional WIP and Solution Preparation Skids



THOMAS ENGINEERING CONTINUOUS COATER

TOTAL COVERAGE...EVERY TABLET...EVERY PROCESS...EVERY TIME...



The Thomas Engineering Continuous Coater extends our proven film coating technology from a customary batch process to an efficient continuous process. The Continuous Coater employs a fully perforated panto achieve the same high performance demonstrated in our range of Accela-Cota® batch coaters. Total process automation is available with our COMPU-COAT coater process control.

Thomas Engineering - Equipment Range



- ACCELA-COTA® Spectrum
- ACCELA-COTA® "D" and ACCELA-COTA® "S"
- 24" and 36" COMPU-LAB
- Continuous Coaters
- Containment Batch Coaters
- Production Size Batch Coaters
- Fully-Integrated Laboratory Size Coaters
- High Throughput for Continuous Applications

jan08

