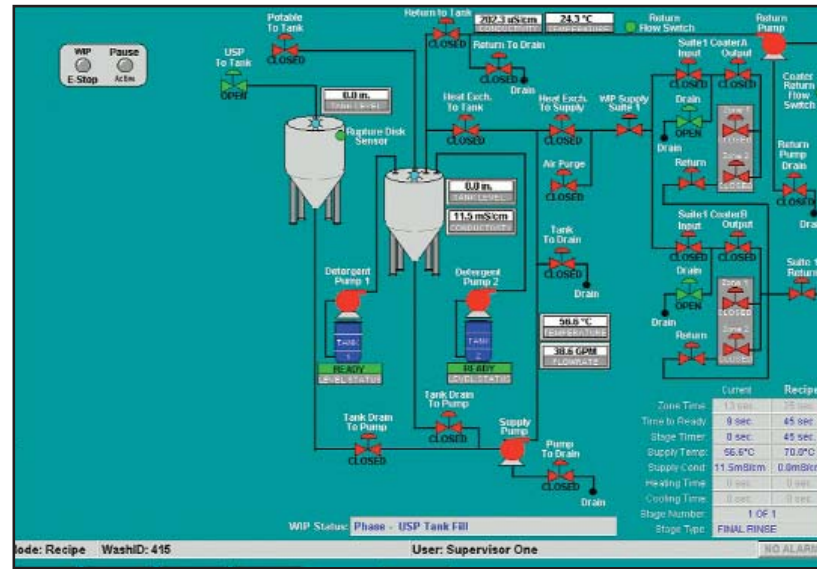
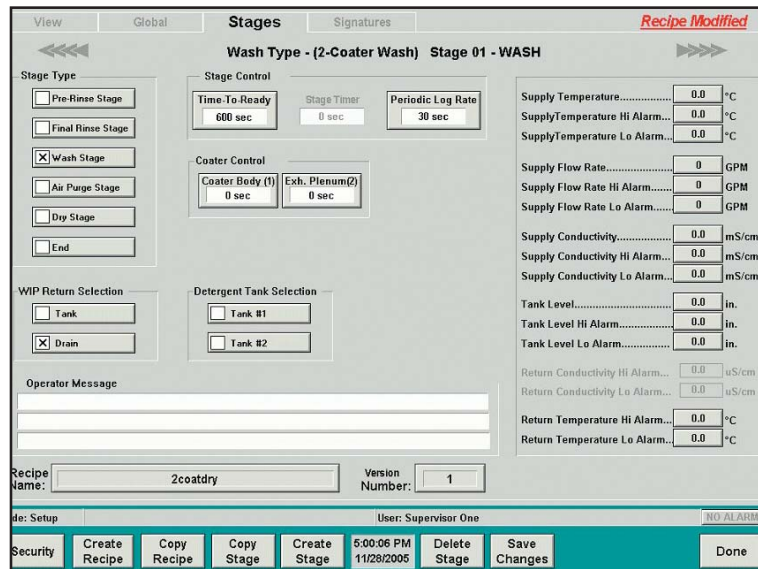


Wash-In-Place Operating Features

- Skid automation fully integrated with COMPU-COAT process controls.
- HMI graphics consistent with COMPU-COAT coater control for effortless operator interface.
- Wash-In-Place stages are recipe controlled for repeatability; expedient validation of system.
- Optional control interface with customer Purified Water Supply and Waste Water Treatment Systems.
- Multiple detergent and sanitizing chemical additions can be provided on same skid and with recipe control.
- Local HMI provided for recipe setup and equipment maintenance.
- Optional remote work stations on network for creating recipes and preparing reports.
- Seamless integration with Wash-In-Place zone valves and spray nozzles built into the Thomas coater.
- Unmatched technical support from the source you trust...Thomas Engineering Inc.

THOMAS ENGINEERING WASH-IN-PLACE

TOTAL COVERAGE...EVERY TABLET...EVERY PROCESS...EVERY TIME...



Hardware and Instrumentation

- Individual tanks for detergent wash and purified water rinse.
- Conductivity sensor and control for detergent metering.
- Optional pH control for effluent neutralization.
- Automatic flow and temperature control.
- Industry standard pumps, control valves and instrumentation throughout.

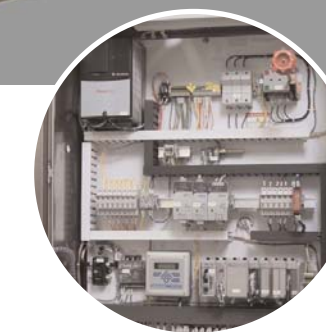
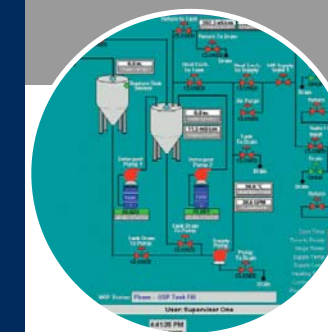


Thomas Engineering - Equipment Range



- **ACCELA-COTA®** Spectrum - Containment Batch Coaters
- **ACCELA-COTA®** "D" and **ACCELA-COTA®** "S" - Production Size Batch Coaters
- 24" and 36" **COMPU-LAB** - Fully-Integrated Laboratory Size Coaters
- Continuous Coaters - High Throughput for Continuous Applications

jan08



Thomas Engineering Wash-In-Place skids are designed for use with our COMPU-COAT controls to provide automated wash service on our Spectrum, Continuous Coater and "D" Series Accela-Cota® tablet coaters. The COMPU-COAT controls may also be used to integrate the Wash-In-Place skid with a Thomas Solution Preparation Skid for automated wash service on the entire system.

